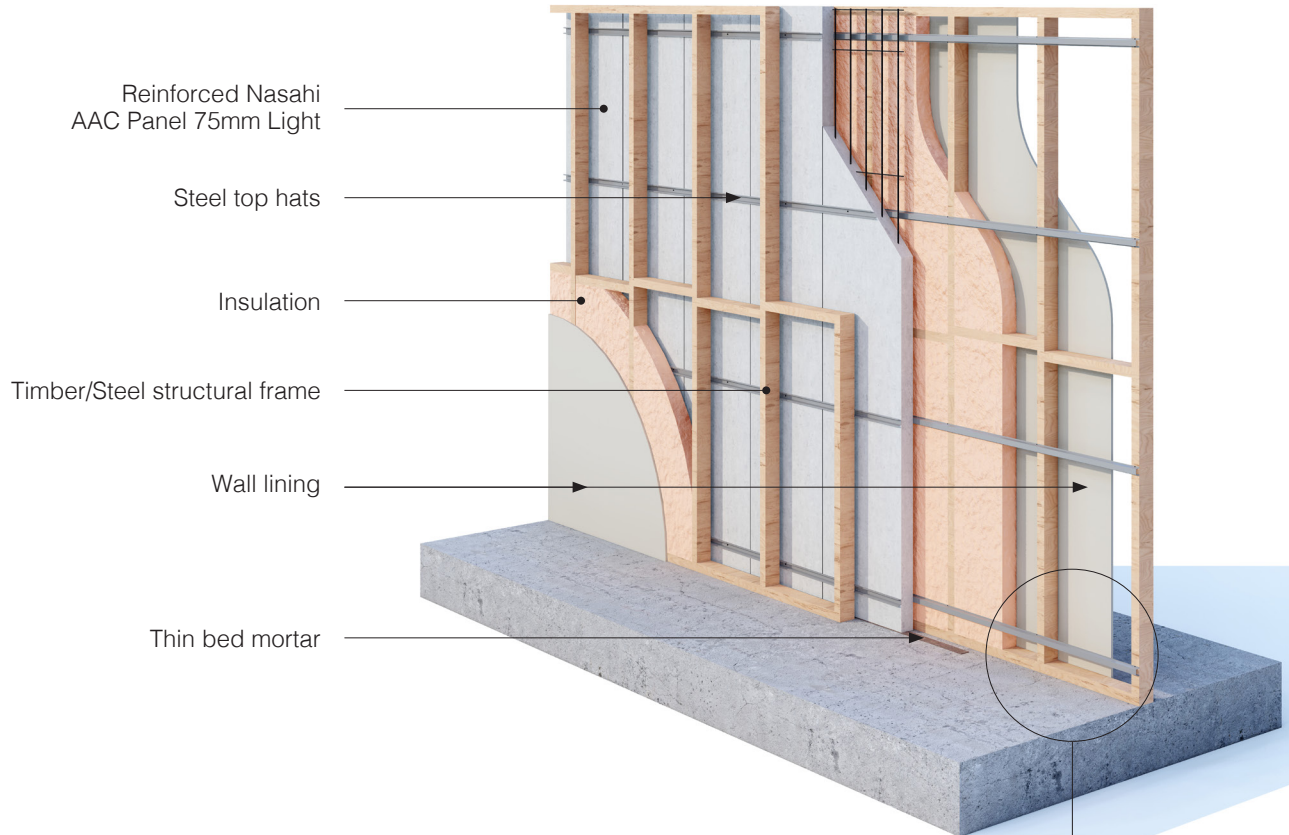
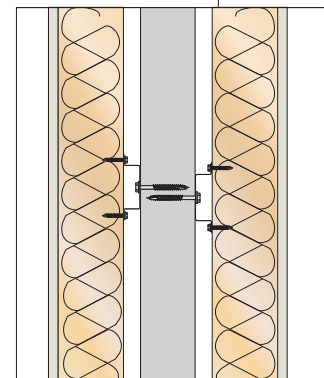


# Inter-tenancy Wall System 75 Light

## Continuous Construction System Overview



The Walsc Inter-tenancy Continuous Wall System offers a steel top hat connection where the reinforced Nasahi AAC Panel 75mm Light is secured to the structural frame with horizontal steel top hats as shown. Walsc AAC Adhesive is applied to the vertical edges where there is an adjoining panel.



Ref No.	Wall Lining A	Stud Depth	Cavity Insulation	AAC Panel	Stud Depth	Cavity Insulation	Wall Lining B	Wall THK.	Acoustics R <sub>w</sub> /R <sub>w</sub> +Ctr	FRL
WIW 7503	13mm Plasterboard (10.4kg/m <sup>2</sup> )	70mm	90mm Glasswool 14kg	75mm Light	70mm	90mm Glasswool 14kg	13mm Plasterboard (10.4kg/m <sup>2</sup> )	289mm 24mm min. Cavity	61/50	90/90/90
WIW 7504	13mm Plasterboard (10.4kg/m <sup>2</sup> )	90mm	90mm Glasswool 11kg	75mm Light	90mm	90mm Glasswool 11kg	13mm Plasterboard (10.4kg/m <sup>2</sup> )	329mm 24mm min. Cavity	61/51	90/90/90

**Note:**

- (1). Please Check with Walsc distributor for panel availability. Distributor contact details are available at [www.walsc.com.au](http://www.walsc.com.au).
- (2). Timber frame should be built to AS1684 or AS1720.1. Steel frame should be built to AS3623 or AS4600.