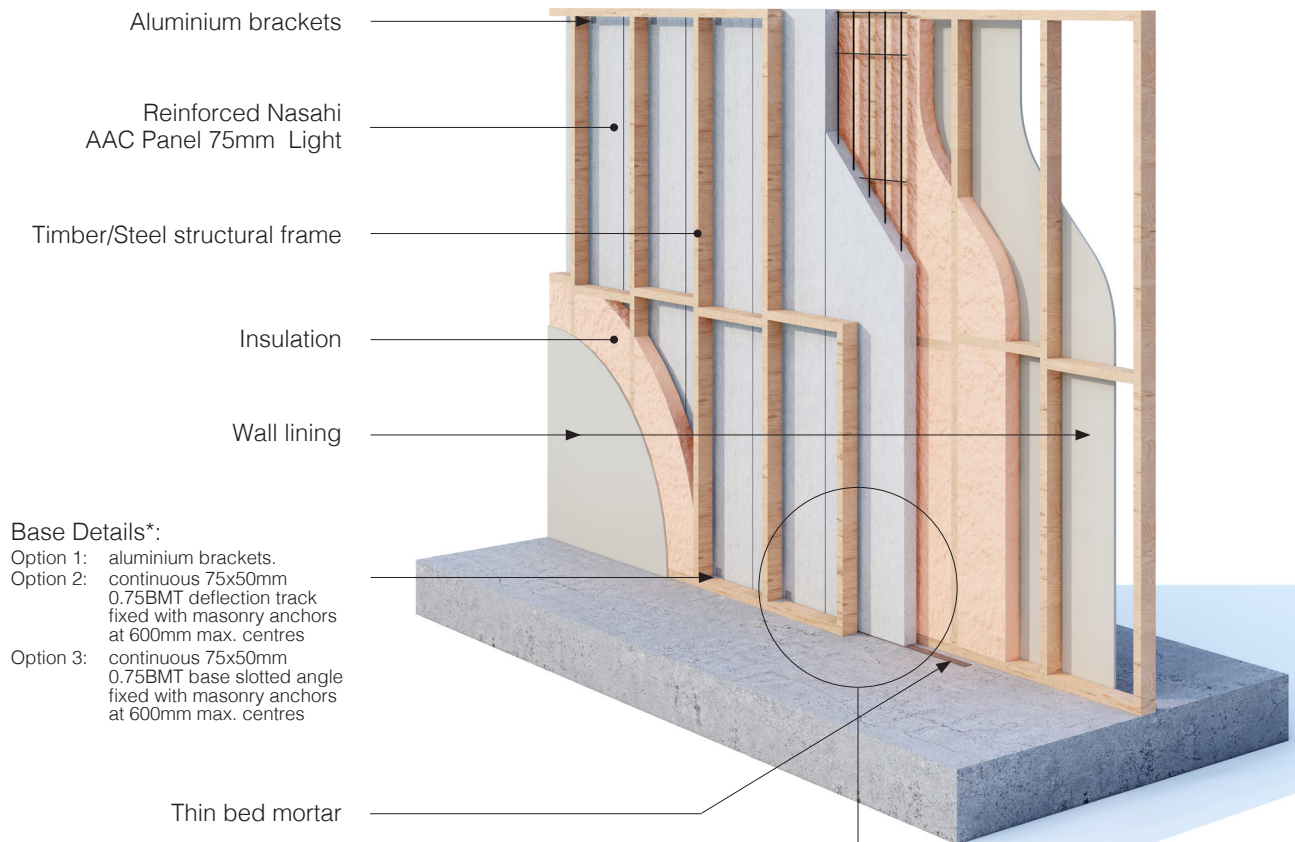


Inter-tenancy Wall System 75 Light

Discontinuous Construction System Overview



The Walsc Inter-tenancy Discontinuous Wall System consists of reinforced Nasahi AAC Panel 75mm Light installed vertically and fixed to the structural frame on each side using aluminium brackets as shown. Walsc AAC Adhesive is applied to the vertical edges where there is an adjoining panel.



| Ref No. | Wall Lining A | Stud Depth | Cavity Insulation | AAC Panel | Stud Depth | Cavity Insulation | Wall Lining B | Wall THK. | Acoustics R _w /R _w +C _{tr} | FRL |
|----------|----------------------------|------------|---------------------|------------|------------|---------------------|----------------------------|---------------------------|---|----------|
| WIW 7501 | 13mm Standard Plasterboard | 70mm | 75mm Glasswool 11kg | 75mm Light | 70mm | 75mm Glasswool 11kg | 13mm Standard Plasterboard | 281mm 20mm min. Cavity | 62/50 | 90/90/90 |
| WIW 7502 | 13mm Standard Plasterboard | 90mm | 75mm Glasswool 11kg | 75mm Light | 90mm | 75mm Glasswool 11kg | 13mm Standard Plasterboard | 321mm 20mm min. Cavity | 63/52 | 90/90/90 |

Note:

- (1). Please Check with Walsc distributor for panel availability. Distributor contact details are available at www.walsc.com.au.
- (2). Timber frame should be built to AS1684 or AS1720.1. Steel frame should be built to AS3623 or AS4600.